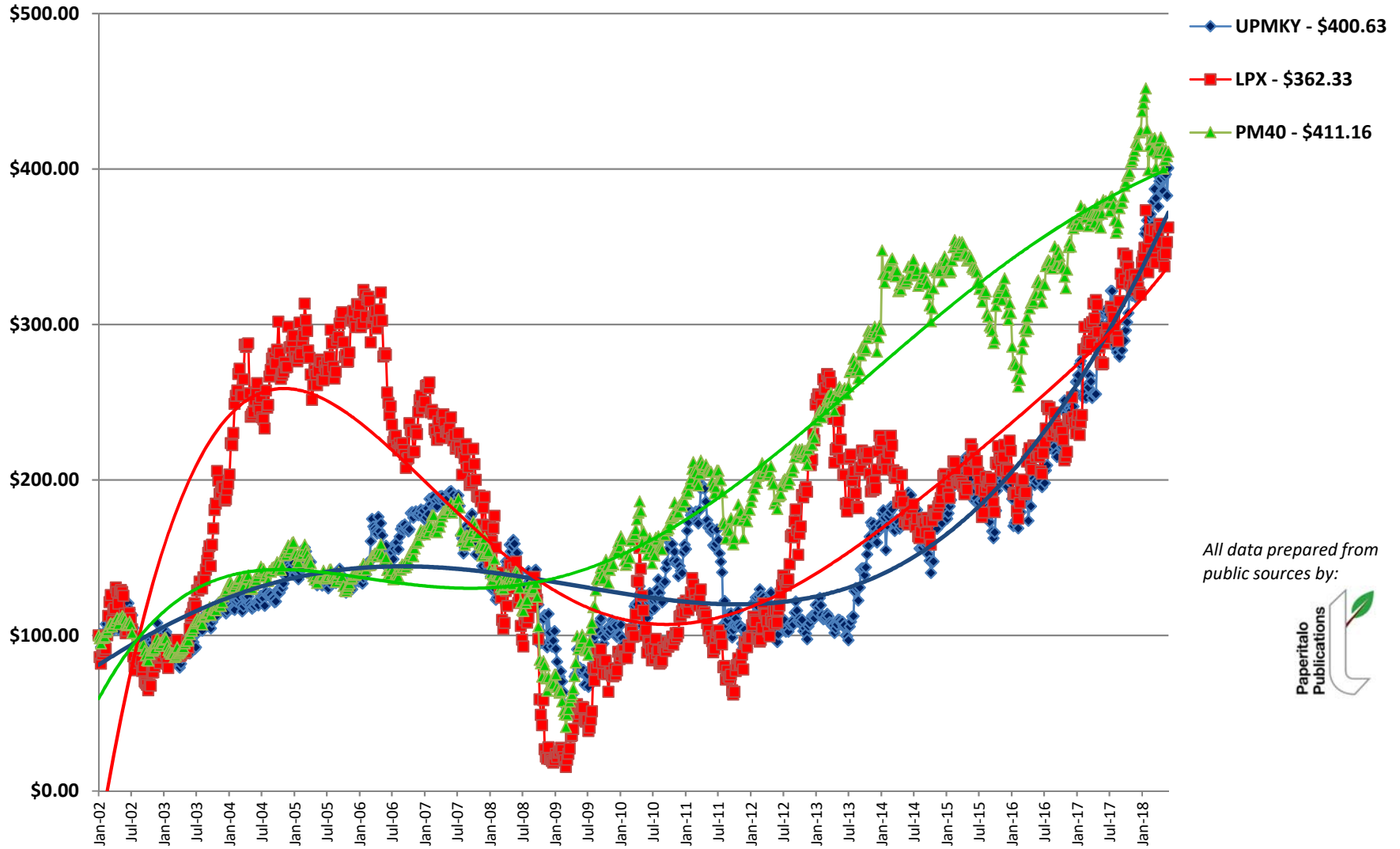


### Disconnected Comparisons UPM Kymmene (UPMKY) and Louisiana Pacific (LPX)

5 Jun 2018





## About the PM40

PaperMoney has developed this forest industry/pulp and paper stock index for use in gauging the relative health of the overall industry. The index, PM40, contains 40 companies engaged primarily in forestry, pulp and paper manufacturing, converting, and printing. Our criterion for selection is as follows:

- Geographic Limitations--none
- Stock Exchange Listing--must be listed on a US exchange (to eliminate the effects of currency fluctuations). American Depositary Receipts (ADRs) are eligible for inclusion.
- Must be primarily dependent on cellulose in any form for business health. In other words, Kimberly-Clark is included, but Procter & Gamble is not. McGraw Hill is included, but the New York Times is not.
- The PM40 is a price-weighted index, rebalanced quarterly.

The companies comprising the index are:

1. 3M Co. (MMM)	11. Glatfelter Co. (GLT)	21. Neenah, Inc. (NP)	31. Sappi Ltd. (SPPJY)
2. Amcor Ltd. (AMCRY)	12. Graphic Packaging Holding Co. (GPK)	22. Orchids Paper Products Inc. (TIS)	32. Schweitzer-Mauduit Int'l Inc. (SWM)
3. Bemis Co. (BMS)	13. Greif Inc. (GEF)	23. Orient Paper Inc. (ONP)	33. Sonoco Products Co. (SON)
4. Boise Cascade Co. (BCC)	14. Hadera Paper Ltd. (HAIPF)	24. Packaging Corp of America (PKG)	34. Stora Enso Oyj (SEOAY)
5. Brookfield Infrastructure Partners (BIP)	15. International Paper Co. (IP)	25. PotlatchDeltic Corp. (PCH)	35. Universal Forest Products Inc. (UFPI)
6. CatchMark Timber Trust Inc. (CTT)	16. KapStone Paper & Packaging Corp. (KS)	26. Quad/Graphics, Inc. (QUAD)	36. UPM-Kymmene Oyj (UPMKY)
7. Clearwater Paper Corp. (CLW)	17. Kimberly-Clark Corp. (KMB)	27. Rayonier Advanced Materials (RYAM)	37. USG Corp. (USG)
8. Domtar Corp. (UFS)	18. Louisiana-Pacific Corp. (LPX)	28. Rayonier Inc. (RYN)	38. Verso Corp. (VRS)
9. Ennis, Inc. (EBF)	19. LSC Communications Inc. (LKSD)	29. RELX Group (RELX)	39. WestRock Co. (WRK)
10. Fibria Celulose SA (FBR)	20. Mercer International Inc. (MERC)	30. Resolute Forest Products Inc. (RFP)	40. Weyerhaeuser Co. (WY)

PaperMoney original material is provided with the intent of stimulating ideas among highly trained, experienced and sophisticated financial managers within the pulp, paper and forest products industry worldwide. PaperMoney relies on published sources for any data used in this material and is not responsible for errors or omissions due to same. This material is expressly not provided for the purpose of investment decisions. Always consult your own advisors before making any investment decisions.